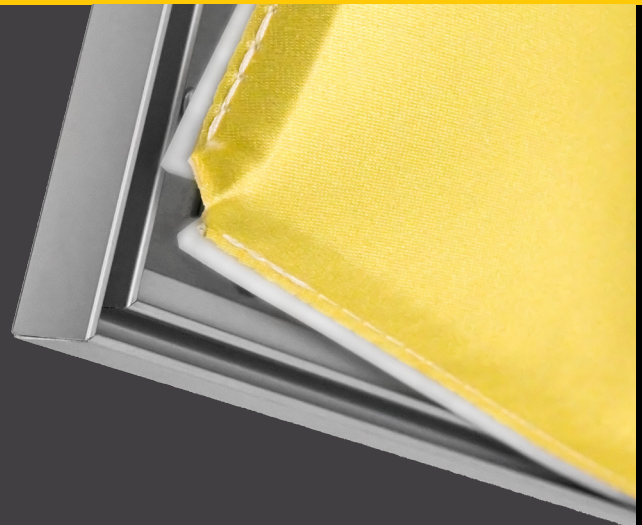
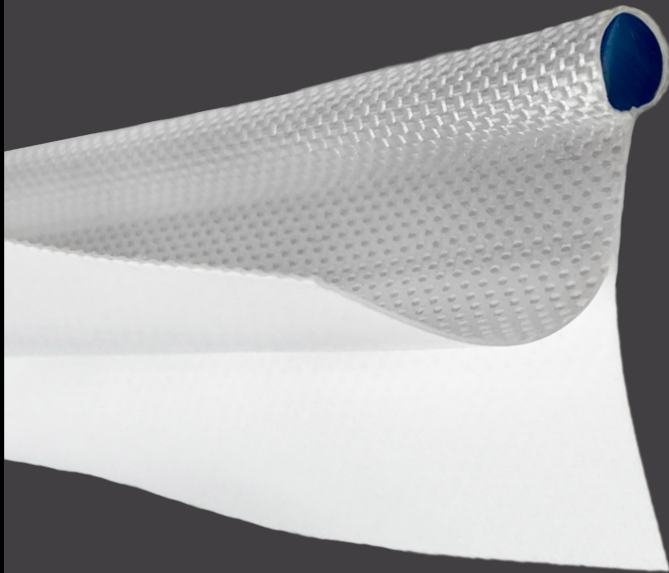


# PRODUCT CATALOG





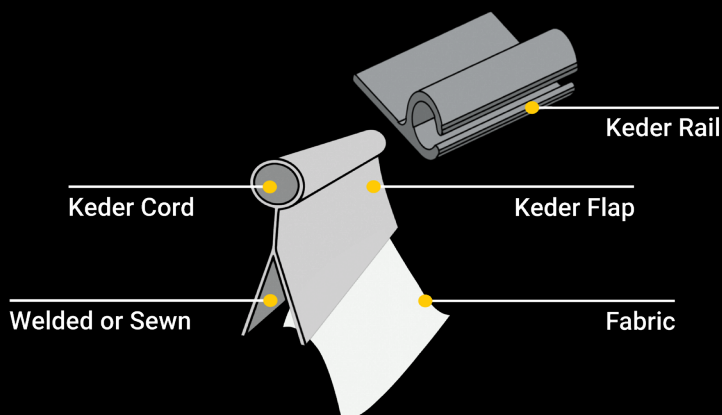
# ABOUT: KEDER SOLUTIONS®

Keder Solutions began in 2009. After years in the tenting industry, we realized that it was becoming nearly impossible to acquire keder. A few short years later, Keder Solutions has expanded its product lines to include not only keder, but fabrics & vinyl, keder rails, curtain hangers, keder cord, flat keder, accessories and more.

We created Keder Solutions with the user's perspective in mind. We wanted to offer a quality product with fast turnaround. We keep it simple, so you can focus on your projects in the various industries we serve. After listening to our clients' needs and ideas, we developed the highest quality of products and services available.

Our loyal customers have assisted our growth in the company by offering exceptional customer service through maximizing quality control and speedy fulfillment. Today, we're proud to empower companies and individuals around the world. Everyone deserves to have easily accessible products, and we're excited to see what you create.

## How Keder Works:



<b>Table of Contents</b>	<b>Page</b>
Markets We Serve	3
Keder	6
Keder Rail	8
Flexible Extrusions & Flat Keder	11
Fabric & Vinyl	12
Hangers & Hooks	17
Accessories	19



## AVIATION

Utilizing the most durable flame retardant vinyls, our keder system is strong enough to support clear span tent structures large enough to house commercial airplanes.



## AWNING & SHADE

Our keder system — including our keder, keder rail, vinyl, and accessories — allow you to build an awning with a taut finish that keeps your space covered, dry, easy to maintain, and looking good.

## CONSTRUCTION & DESIGN

Our keder system has many uses in the construction industry, from wrapping scaffolding to protect workers, or to serve as an aesthetic covering to disguise the eyesore of a construction site in a populous area. Keder can also be used to create temporary structures at construction sites, such as temporary working quarters or break rooms.



## DISASTER RELIEF

We know time is of the essence to respond after a disaster. And having the ability to build response centers, health clinics, and safety shelters quickly is a must. While some suppliers take weeks to fulfill orders, our machines run 24/7, and can often turnaround orders on the same day.

## MARINE

Keder and PVC extrusions are commonly used in the marine industry for boat tops, curtains, and upholstery to create a tight seal. Our flexible rails make it extremely versatile when installing around the curvature of boats. We also provide additional anti-water-wicking keder products and accessories.



## MILITARY, GOVERNMENT, & BERRY AMENDMENT

Keder has nearly limitless uses in military and government applications. And what makes Keder Solutions the go-to is Berry Compliance. Headquartered outside Milwaukee, Wisconsin, we are an American manufacturer with capabilities to source American materials and components to produce Berry Compliant products.



## POOL COVER SYSTEMS

With corrosion-resistant brass anchors and durable vinyls, we offer a reliable and dependable solutionS for in-ground pool covers, enclosures, break rooms, and pool winterization.



## VINYL DOOR & SCREEN

Our keder system is perfect for vinyl strip doors, commercial roll-up partitions, and home patio screens. And we have a wide selection of keder, fabrics, and keder rail for many applications. Whether you're looking for something durable for commercial use or something that simply looks great and easy to clean for your home, we have exactly what you need.





## SIGN, BANNER & FABRIC PRINTING

Demand is increasing for turn-key solutions that affix a printed cloth to aluminum frames, in both large format printing for both PVC banners and textile frames – Keder Solutions has developed a versatile line of products to support a variety of signage including SEG, retail signage, POS and expo displays.

*Keder Solutions introduces the launch of KederMacroPrint.com, our sign and banner division, serving the large format print and sign industry.*



## TENT & FABRIC STRUCTURE

Our Keder can be used on all major structure and frame tents. By securing a tight and smooth connection between vinyl tops and sidewalls to keder rail, our tents and structures are incredibly durable and long-lasting. Combined, our founders share decades of experience in the tenting and structure industry. Because of our vast experience and knowledge of the industry, we serve tenting and structure clients better than anyone else.



## TARP

Keder offers a durable solution to create tarps for a myriad of applications – everything from containment liners to pond liners to cistern liners and liner underlay. Our tarps can also be used for welding curtains and serve as a protective cover on trucks, rail cars and gondolas. We can also create a tarp for semi trucks in a color to match your company's brand. And our tarps also serve as durable curtains and industrial partitions.



## TRAILER & CAMPER

Offering shade or valuable rain protection for your campsite, our keder can be used to create awnings for the side of your camper. We sell the awning rail along with the hangers and accessories, delivering a one-stop awning solution.



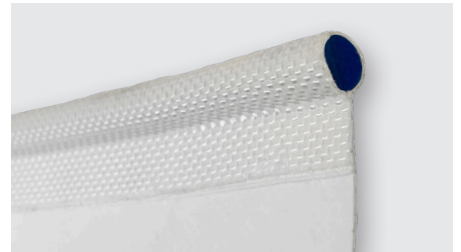
## Double Flap Keder

<b>Size</b>	3 - 15 mm.
<b>Unit Length</b>	200 yd.
<b>Weld Size</b>	10 mm.
<b>Flap Size</b>	4 - 6 mm. Keder: 20 mm.   7.5 - 15 mm. Keder: 30 mm.
<b>Fabric</b>	Standard, Panama, Berry Compliant, Anti-Wick™
<b>Color</b>	White, Gray, Black



## Single Flap Keder

<b>Size</b>	3 - 15 mm.
<b>Unit Length</b>	200 yd.
<b>Weld Size</b>	10 mm.
<b>Flap Size</b>	6 mm. Keder: 25 mm.   7.5 - 8.5 mm. Keder: 20 mm.   11 - 13 mm. Keder: 30 mm.
<b>Fabric</b>	Standard, Panama, Berry Compliant, Anti-Wick™
<b>Color</b>	White, Gray, Black



## Welded Flap Keder

<b>Size</b>	7.5, 8.5 mm.
<b>Unit Length</b>	100 yd.
<b>Weld Size</b>	20 mm.
<b>Flap Size</b>	N/A
<b>Fabric</b>	Standard, Panama
<b>Color</b>	White, Gray, Black



## Repair Flap Keder

<b>Size</b>	8.5 - 15 mm.
<b>Unit Length</b>	100 yd.
<b>Weld Size</b>	40 mm.
<b>Flap Size</b>	30, 40 mm.
<b>Fabric</b>	Panama, Berry Compliant
<b>Color</b>	White, Gray, Black

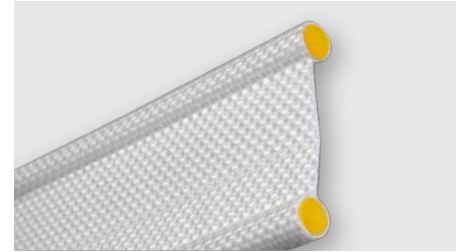


**\*All of our Keder is now fully-bonded DuraKeder™.**



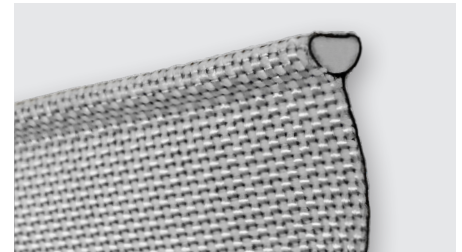
**Double Keder**

<b>Size</b>	4 - 8.5 mm.
<b>Unit Length</b>	100 yd.
<b>Weld Size</b>	20 mm.
<b>Flap Size</b>	N/A
<b>Fabric</b>	Standard, Panama
<b>Color</b>	White, Gray, Black



**Flat-Back Keder™**

<b>Size</b>	8.5 mm.
<b>Unit Length</b>	100 yd.
<b>Weld Size</b>	20 mm.
<b>Flap Size</b>	N/A
<b>Fabric</b>	Standard, Panama
<b>Color</b>	White, Gray, Black



**Keder Flap Types**



Double Flap



Single Flap



Double Keder



Welded Flap

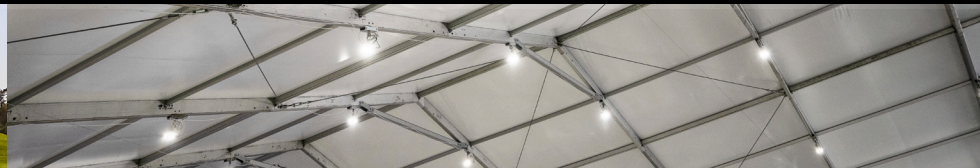


Repair Keder

**Keder Fabric Types**

- Anti-Wick™** Features a unique weave that wicks away water (25 oz.)
- Berry Compliant** Made in the U.S., ideal for government projects (19 oz.)
- HDP** HDP (High Density Polyester) a low-friction material (11 oz.)
- Panama** Tough fabric with a coating that blocks out light (19 oz.)
- Standard** Durable and reliable keder fabric that is translucent (15 oz.)
- 24 oz.** Heavy, silver panama fabric that blocks out light (24 oz.)
- 32 oz.** Heavy, white-on-white panama fabric that blocks out light (32 oz.)

# SINGLE ALUMINUM RAIL

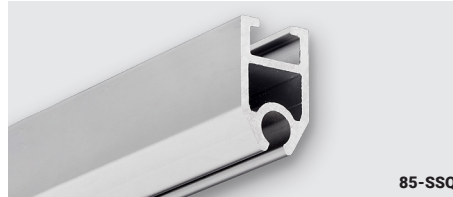


## 8.5 mm Straight Rail



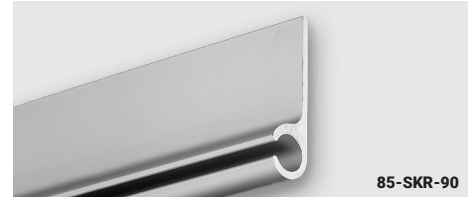
<b>Size</b>	8.5 mm.
<b>Unit Length</b>	196.85 in. (5 m.)
<b>Keder Compatibility</b>	6 - 8.5 mm.
<b>Material</b>	Aluminum, Anodized

## 8.5 mm Square Rail



<b>Size</b>	8.5 mm.
<b>Unit Length</b>	120 in. (3.05 m.)
<b>Keder Compatibility</b>	7.5 - 8.5 mm.
<b>Material</b>	Aluminum, Anodized

## 8.5 mm 90° Degree Rail



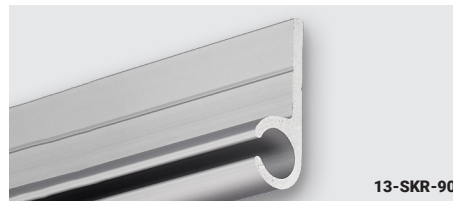
<b>Size</b>	8.5 mm.
<b>Unit Length</b>	196.85 in. (5 m.)
<b>Keder Compatibility</b>	6 - 8.5 mm.
<b>Material</b>	Aluminum, Anodized

## 13 mm Straight Rail



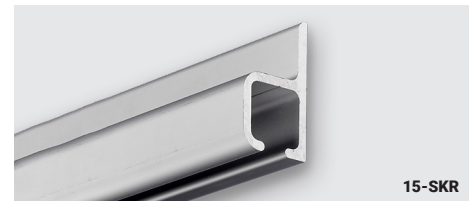
<b>Size</b>	13 mm.
<b>Unit Length</b>	196.85 in. (5 m.)
<b>Keder Compatibility</b>	8.5 - 13 mm.
<b>Material</b>	Aluminum, Anodized

## 13 mm 90° Degree Rail



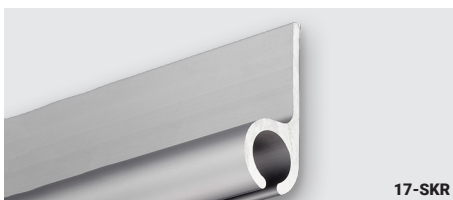
<b>Size</b>	13 mm.
<b>Unit Length</b>	196.85 in. (5 m.)
<b>Keder Compatibility</b>	8.5 - 13 mm.
<b>Material</b>	Aluminum, Anodized

## 15 mm Straight Rail



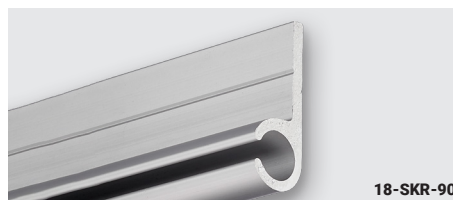
<b>Size</b>	15 mm.
<b>Unit Length</b>	196.85 in. (5 m.)
<b>Keder Compatibility</b>	8.5 - 15 mm.
<b>Material</b>	Aluminum, Anodized

## 17 mm Straight Rail



<b>Size</b>	17 mm.
<b>Unit Length</b>	196.85 in. (5 m.)
<b>Keder Compatibility</b>	10 - 15 mm.
<b>Material</b>	Aluminum, Anodized

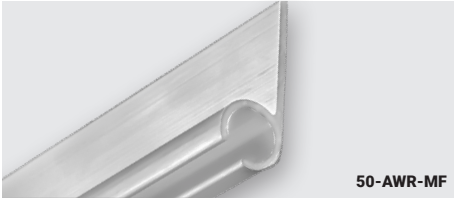
## 18 mm 90° Degree Rail



<b>Size</b>	18 mm.
<b>Unit Length</b>	196.85 in. (5 m.)
<b>Keder Compatibility</b>	10 - 15 mm.
<b>Material</b>	Aluminum, Anodized

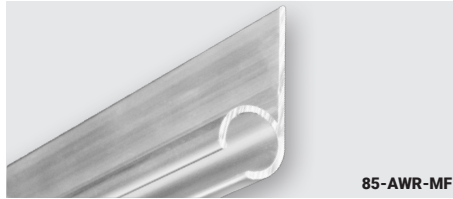


## 5 mm Awning Rail



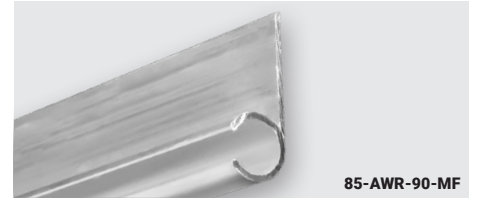
<b>Size</b>	5 mm.
<b>Unit Length</b>	93 in. (2.36 m.)
<b>Keder Compatibility</b>	5 mm.
<b>Material</b>	Aluminum, Mill

## 8.5 mm Awning Rail



<b>Size</b>	8.5 mm.
<b>Unit Length</b>	93 in. (2.36 m.)
<b>Keder Compatibility</b>	7.5 - 8.5 mm.
<b>Material</b>	Aluminum, Mill

## 8.5 mm 90° Degree Awning Rail



<b>Size</b>	8.5 mm.
<b>Unit Length</b>	93 in. (2.36 m.)
<b>Keder Compatibility</b>	7.5 - 8.5 mm.
<b>Material</b>	Aluminum, Mill

## 9 mm Double Rail



<b>Size</b>	9 mm.
<b>Unit Length</b>	196.85 in. (5 m.)
<b>Keder Compatibility</b>	7.5 - 11 mm.
<b>Material</b>	Aluminum, Anodized

## 12 mm 2.0" Double Rail



<b>Size</b>	12 mm.
<b>Unit Length</b>	196.85 in. (5 m.)
<b>Keder Compatibility</b>	10 - 12 mm.
<b>Material</b>	Aluminum, Anodized

## 13 mm 3.0" Double Rail



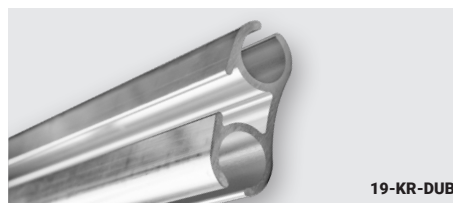
<b>Size</b>	13 mm.
<b>Unit Length</b>	196.85 in. (5 m.)
<b>Keder Compatibility</b>	10 - 13 mm.
<b>Material</b>	Aluminum, Anodized

## 13 mm 3.5" Double Rail



<b>Size</b>	13 mm.
<b>Unit Length</b>	196.85 in. (5 m.)
<b>Keder Compatibility</b>	10 - 13 mm.
<b>Material</b>	Aluminum, Anodized

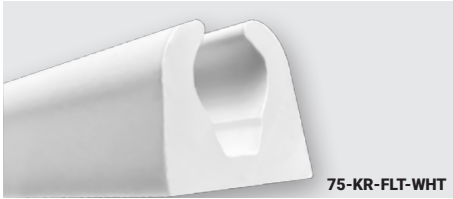
## 19 mm Double Rail



<b>Size</b>	19 mm.
<b>Unit Length</b>	240 in. (6.1 m.)
<b>Keder Compatibility</b>	10 - 15 mm.
<b>Material</b>	Aluminum, Mill

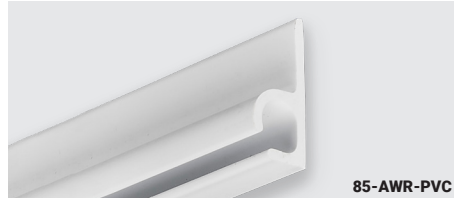


## 7.5 mm Single Keder Rail



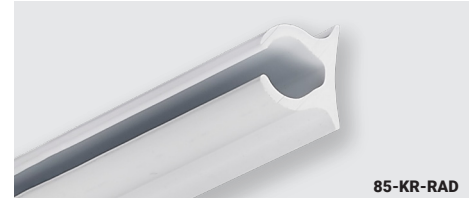
<b>Size</b>	7.5 mm.
<b>Unit Length</b>	93 in. (2.36 m.)
<b>Keder Compatibility</b>	6 - 7.5 mm.
<b>Material / Color</b>	PVC (White)

## 8.5 mm Awning Rail



<b>Size</b>	8.5 mm.
<b>Unit Length</b>	90, 93, 96 in.
<b>Keder Compatibility</b>	7.5 - 8.5 mm.
<b>Material / Color</b>	PVC (Black, White)

## 8.5 mm Radius Rail



<b>Size</b>	8.5 mm.
<b>Unit Length</b>	93, 96, 120 in.
<b>Keder Compatibility</b>	6 - 8.5 mm.
<b>Material / Color</b>	PVC (Black, White)

## 8.5 mm Sewable Flange Rail



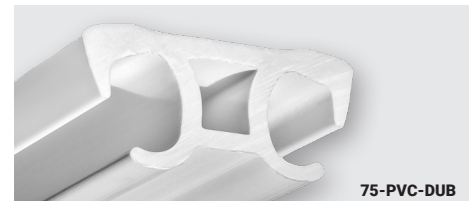
<b>Size</b>	8.5 mm.
<b>Unit Length</b>	93, 96 in.
<b>Keder Compatibility</b>	6 - 8.5 mm.
<b>Material / Color</b>	PVC (Black, White)

## 7.5 mm Double Keder Rail



<b>Size</b>	7.5 mm.
<b>Unit Length</b>	116 in. (2.95 m.)
<b>Keder Compatibility</b>	6 - 7.5 mm.
<b>Material / Color</b>	PVC (White)

## 7.5 mm Double Rail



<b>Size</b>	7.5 mm.
<b>Unit Length</b>	93 in. (2.36 m.)
<b>Keder Compatibility</b>	7.5 mm.
<b>Material / Color</b>	PVC (White)

## 9 mm Double Rail



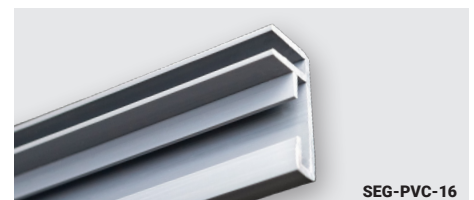
<b>Size</b>	9 mm.
<b>Unit Length</b>	196.85 in. (5 m.)
<b>Keder Compatibility</b>	7.5 - 8.5 mm.
<b>Material / Color</b>	PVC (White)

## 7.5 mm Triple Keder Rail

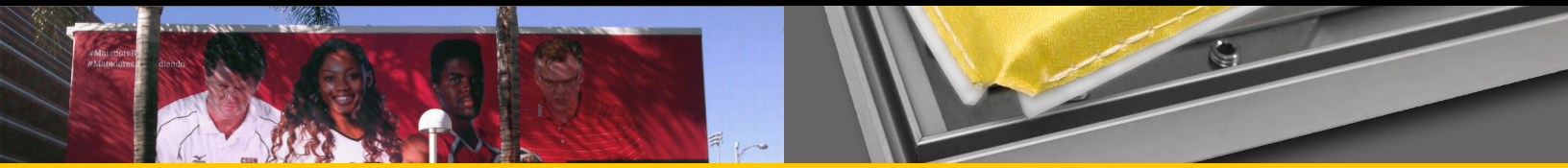


<b>Size</b>	7.5 mm.
<b>Unit Length</b>	93, 144, 192 in. (2.36 m.)
<b>Keder Compatibility</b>	6, 7.5 mm.
<b>Material / Color</b>	PVC (White)

## PVC SEG Track



<b>Size</b>	3 mm.
<b>Unit Length</b>	196.85 in.
<b>Keder Compatibility</b>	3 mm. (Flat Keder)
<b>Material / Color</b>	PVC (Gray)

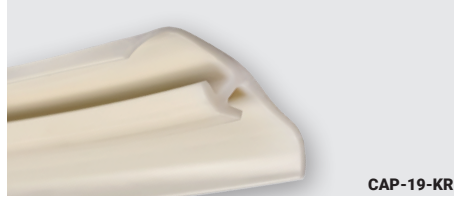


## PVC Keder Cord



<b>Size</b>	2 - 14 mm. (Specifics Below)
<b>Unit Length</b>	Sold Per Yard
<b>Color</b>	Various Colors Available
<b>Material</b>	PVC

## Rail Cap, 19 mm. Double Rail



<b>Size</b>	19 mm. Double Rail
<b>Unit Length</b>	Sold By Spool/140 ft.
<b>Color</b>	White
<b>Material</b>	PVC

## Wear Strip



<b>Size</b>	25.4 mm x 1.05 mm
<b>Unit Length</b>	Sold By Spool/140 ft.
<b>Color</b>	Black
<b>Material</b>	PVC



14.0 mm.  
0.551 in.  
35/64 in.

Dark Gray



12.0 mm.  
0.472  
15/32 in.

White



11.0 mm.  
0.433 in.  
7/16 in.

Yellow



10.0 mm.  
0.393 in.  
25/64 in.

Black



9.0 mm.  
0.354 in.  
23/64 in.

Purple



7.5 mm.  
0.295 in.  
19/64 in.

Blue



6.5 mm.  
0.255 in.  
1/4 in.

Green



5.0 mm.  
0.196 in.  
13/64 in.

Yellow



4.0 mm.  
0.157 in.  
5/32 in.

Orange



3.0 mm.  
0.118  
1/8 in.

Gray



2.0 mm.  
0.078 in.  
5/64 in.

Red

## PVC SEG Flat Keder

<b>Size</b>	14mm. x 3mm.   12mm. x 3.6mm.   12mm. x 3mm.   12mm. x 2.65mm.   12mm. x 1.5mm.   9mm. x 3mm.
<b>Unit Length</b>	Sold By Roll/500 ft.
<b>Color</b>	White, Clear



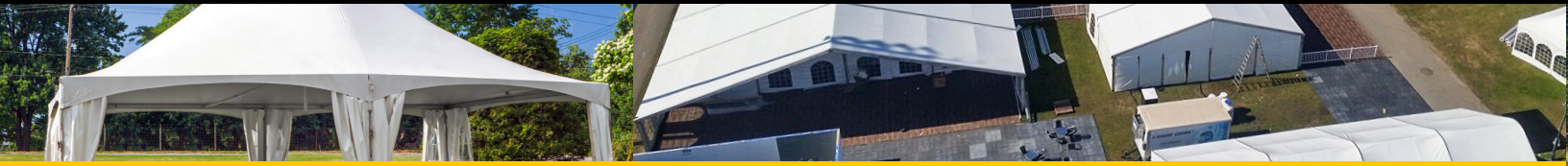
FKE-PVC

## Silicone SEG Flat Keder

<b>Size</b>	14mm. x 3mm.   12mm. x 3mm.   12mm. x 1.5mm.   9mm. x 3mm.
<b>Unit Length</b>	Sold By Roll/500 ft.
<b>Color</b>	White

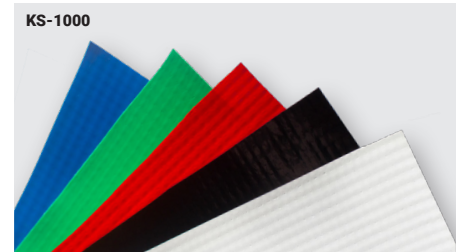


FKE-SCN



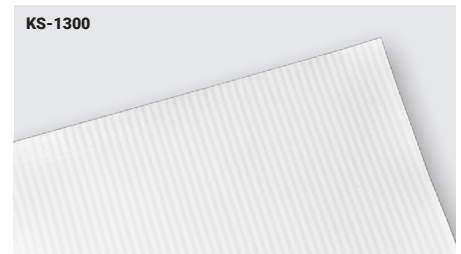
## KS1000™ - Translucent Laminate

<b>Weight</b>	10 oz. Laminate
<b>Color</b>	White, Black, Red, Green, Blue
<b>Unit Width</b>	61, 136 in.
<b>Unit Length</b>	100 yd.
<b>Transparency</b>	Translucent



## KS1300™ - Frontlit Translucent Laminate

<b>Weight</b>	13 oz. Printable Laminate
<b>Color</b>	White
<b>Unit Width</b>	64 in. (Additional sizes available upon request)
<b>Unit Length</b>	50, 250 yd.
<b>Transparency</b>	Translucent



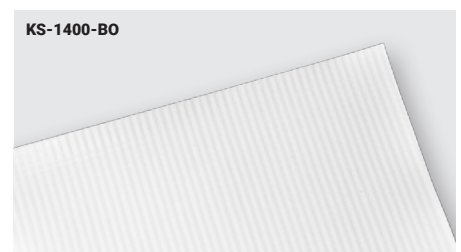
## KS1400™ - Translucent Laminate

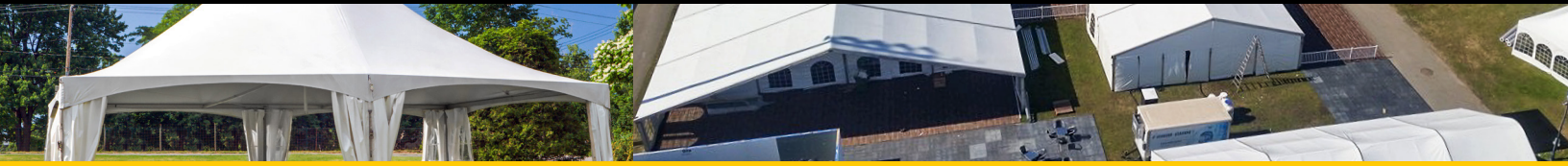
<b>Weight</b>	14 oz. Laminate
<b>Color</b>	White, Black, Red, Yellow, Green, Blue
<b>Unit Width</b>	61, 88, 90, 98, 104 in.
<b>Unit Length</b>	100 yd.
<b>Transparency</b>	Translucent



## KS1400™ - Blockout Laminate

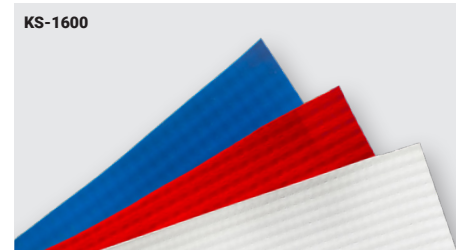
<b>Weight</b>	14 oz. Laminate
<b>Color</b>	White
<b>Unit Width</b>	61 in.
<b>Unit Length</b>	100 yd.
<b>Transparency</b>	Blockout





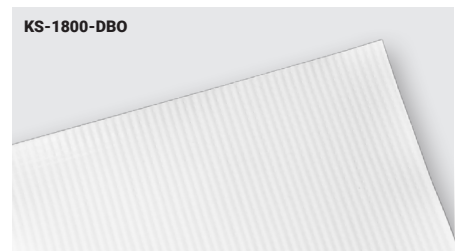
## KS1600™ - Blockout Laminate

<b>Weight</b>	16 oz. Laminate
<b>Color</b>	White, Black, Red, Blue
<b>Unit Width</b>	61, 63, 98, 104, 136 in.
<b>Unit Length</b>	100 yd.
<b>Transparency</b>	Blockout



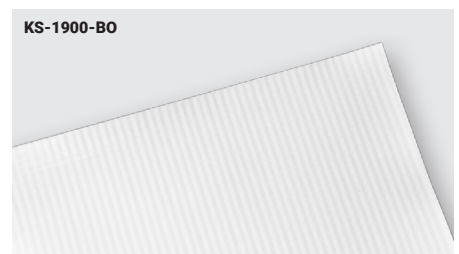
## KS1800™ - Double Blockout Laminate

<b>Weight</b>	18 oz. Laminate
<b>Color</b>	White
<b>Unit Width</b>	61, 63 in.
<b>Unit Length</b>	100 yd.
<b>Transparency</b>	Double Blockout



## KS1900™ - Blockout Laminate

<b>Weight</b>	19 oz. Laminate
<b>Color</b>	White
<b>Unit Width</b>	61 in.
<b>Unit Length</b>	100 yd.
<b>Transparency</b>	Blockout





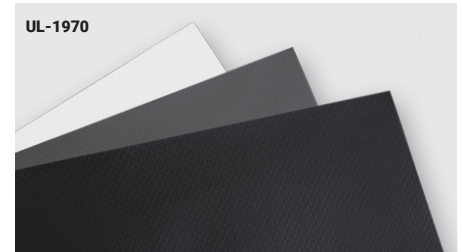
## ULTRA™ 1900 - Translucent Coated

<b>Weight</b>	19 oz. Coated
<b>Color</b>	White/White (Gloss)
<b>Unit Width</b>	61, 98.5 in.
<b>Unit Length</b>	100 yd.
<b>Transparency</b>	Translucent



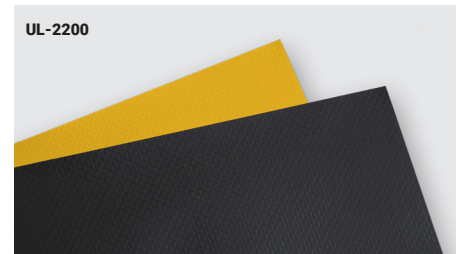
## ULTRA™ 1970 - Blockout Coated

<b>Weight</b>	19.7 oz. Coated
<b>Color</b>	White/White (Gloss), Gray/Gray (Gloss), Gray/Black (Matte)
<b>Unit Width</b>	98.5 in.
<b>Unit Length</b>	100 yd.
<b>Transparency</b>	Blockout



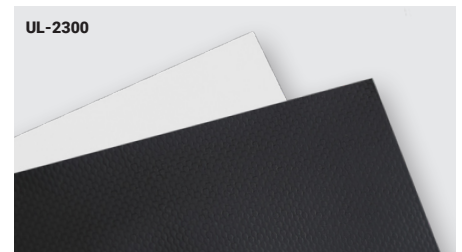
## ULTRA™ 2200 - Translucent Coated

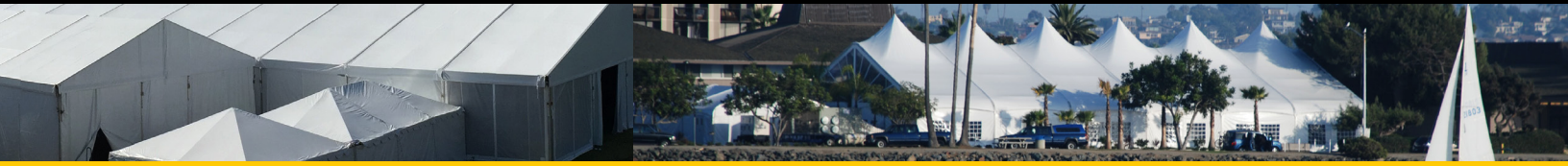
<b>Weight</b>	22 oz. Coated
<b>Color</b>	Black/Black (Matte), Yellow/Yellow (Matte)
<b>Unit Width</b>	59, 61 in.
<b>Unit Length</b>	100 yd.
<b>Transparency</b>	Translucent



## ULTRA™ 2300 - Blockout Coated

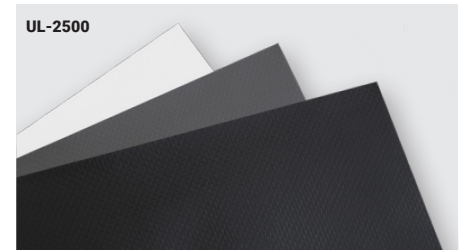
<b>Weight</b>	23 oz. Coated
<b>Color</b>	White/White (Gloss), Black/Black (Gloss)
<b>Unit Width</b>	61, 98.5, 115.5 in.
<b>Unit Length</b>	100, 250 yd.
<b>Transparency</b>	Blockout





## ULTRA™ 2500 - Blockout Coated

<b>Weight</b>	25 oz. Coated
<b>Color</b>	White/White (Gloss), Silver/White (Gloss), Black/White (Gloss)
<b>Unit Width</b>	61, 88, 98.5, 115.5, 126, 191.75 in.
<b>Unit Length</b>	100, 250 yd.
<b>Transparency</b>	Blockout



## SUPERCLEAR™ 1600



<b>Weight</b>	16 Gauge
<b>Unit Width</b>	54, 61 in.
<b>Unit Length</b>	50 yd.
<b>Transparency</b>	Transparent

## SUPERCLEAR™ 2000



<b>Weight</b>	20 Gauge
<b>Unit Width</b>	54, 61, 72 in.
<b>Unit Length</b>	50 yd.
<b>Transparency</b>	Transparent

## SUPERCLEAR™ 3000



<b>Weight</b>	30 Gauge
<b>Unit Width</b>	61, 72 in.
<b>Unit Length</b>	30 yd.
<b>Transparency</b>	Transparent

## SUPERCLEAR™ 4000



<b>Weight</b>	40 Gauge
<b>Unit Width</b>	61 in.
<b>Unit Length</b>	30 yd.
<b>Transparency</b>	Transparent

## SUPERCLEAR™ 8000



<b>Weight</b>	80 Gauge
<b>Unit Width</b>	61 in.
<b>Unit Length</b>	10 yd.
<b>Transparency</b>	Transparent

## MESH FABRIC - Coated



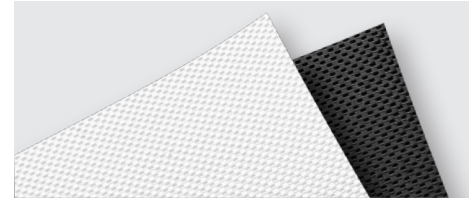
<b>Weight</b>	8 oz. Mesh
<b>Unit Width</b>	98.5 in.
<b>Unit Length</b>	100 yd.
<b>Transparency</b>	Transparent



## Keder Fabric

Keder fabric can be used for a wide range of applications, including tent sidewalls, awnings, curtains, and banners. It is often used in conjunction with aluminum frames or other support structures to create strong and durable temporary or semi-permanent structures. Keder fabric is also commonly used in the transportation industry, where it is used to create truck covers and other heavy-duty tarps. Different fabrics may have different levels of strength, flexibility, and weather resistance, as well as different colors and finishes to suit your specific needs.

## Standard Weave



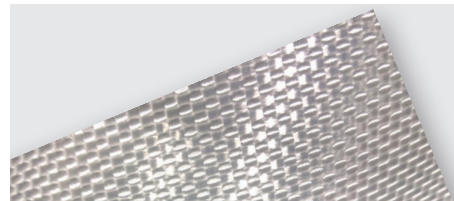
<b>Weight</b>	15 oz.
<b>Unit Width</b>	68 in.
<b>Transparency</b>	Translucent
<b>Color</b>	White, Black

## Anti-Wick™



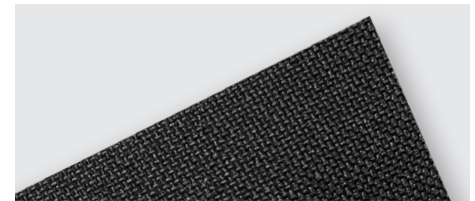
<b>Weight</b>	25 oz.
<b>Unit Width</b>	59 in.
<b>Transparency</b>	Blockout
<b>Color</b>	White

## Berry Compliant



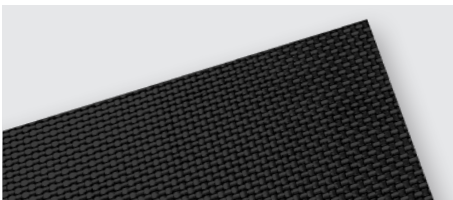
<b>Weight</b>	19 oz.
<b>Unit Width</b>	60 in.
<b>Transparency</b>	Blockout
<b>Color</b>	White/Gray

## High Density Polyester (HDP)



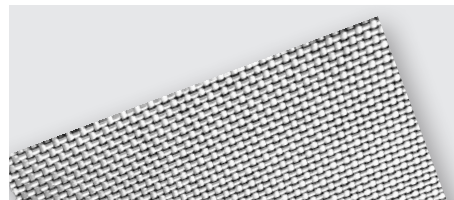
<b>Weight</b>	11 oz.
<b>Unit Width</b>	58 in.
<b>Transparency</b>	Dark (Not Blockout)
<b>Color</b>	Black

## Panama Weave



<b>Weight</b>	19 oz.
<b>Unit Width</b>	61 in.
<b>Transparency</b>	Blockout
<b>Color</b>	White, Black, Gray

## 2400™ Series



<b>Weight</b>	24 oz.
<b>Unit Width</b>	59 in.
<b>Transparency</b>	Blockout
<b>Color</b>	Gray/Black

## 3200™ Series



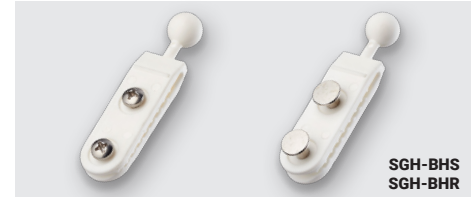
<b>Weight</b>	32 oz.
<b>Unit Width</b>	60 in.
<b>Transparency</b>	Blockout
<b>Color</b>	White, Black



## Crocodile Hangers®

Crocodile Hangers™ are the ultimate solution for hanging your tent sidewalls, curtains, awnings, and banners. These versatile plastic hangers are designed to slide easily into keder rails or structure frames, allowing you to quickly and securely hang your materials without the need for complicated hardware or tools. With an impressive 70% increase in strength over other hangers on the market, these hangers have been rigorously tested and confirmed by outside labs to be the strongest and most durable option available. A variety of styles available, including options for screws or rivets.

## Ball Hook



SGH-BHS  
SGH-BHR

<b>Material / Color</b>	PVC (White or Black)
<b>Style</b>	Rivet or Screw
<b>Rail Size(s)</b>	8, 9, 12 mm.
<b>Units</b>	100 Per Set

## Bent Hook



SGH-KBH-S  
SGH-KBH-R

<b>Material / Color</b>	PVC (White)
<b>Style</b>	Rivet or Screw
<b>Rail Size(s)</b>	9, 12 mm.
<b>Units</b>	100 Per Set

## Straight Hook



SGH-SHS

<b>Material / Color</b>	PVC (White)
<b>Style</b>	Rivet or Screw
<b>Rail Size(s)</b>	9, 12 mm.
<b>Units</b>	100 Per Set

## Bar Slider



SGH-BSS  
SGH-BSR

<b>Material / Color</b>	PVC (White)
<b>Style</b>	Rivet or Screw
<b>Rail Size(s)</b>	10 mm.
<b>Units</b>	100 Per Set

## Calott-Slider



SGH-CSS  
SGH-CSR

<b>Material / Color</b>	PVC (White or Black)
<b>Style</b>	Rivet or Screw
<b>Rail Size(s)</b>	8, 9, 12 mm.
<b>Units</b>	100 Per Set

## Roller for Keder Track



SGH-RKS  
SGH-RKR

<b>Material / Color</b>	PVC (White or Black)
<b>Style</b>	Rivet or Screw
<b>Rail Size(s)</b>	16 mm.
<b>Units</b>	100 Per Set

## Roller For Square Track



SGH-RSS  
SGH-RSR

<b>Material / Color</b>	PVC (White or Black)
<b>Style</b>	Rivet or Screw
<b>Rail Size(s)</b>	14 mm.
<b>Units</b>	100 Per Set



## Bent Hook



<b>Material</b>	Steel, Zinc Plated
<b>Color</b>	Silver
<b>Size</b>	11, 16 mm.
<b>Units</b>	100 Per Set

## Rail Hook



<b>Material</b>	Steel, Zinc Plated
<b>Color</b>	Silver
<b>Size</b>	12 mm.
<b>Units</b>	100 Per Set

## Roller Hook



<b>Material</b>	Steel, Zinc Plated
<b>Color</b>	Silver
<b>Size</b>	4.5 mm.
<b>Units</b>	100 Per Set

## Slot Ring Holder



<b>Material</b>	Steel, Zinc Plated
<b>Color</b>	Silver
<b>Size</b>	6 mm. or Less
<b>Units</b>	100 Per Set

## Straight Hook



<b>Material</b>	Steel, Zinc Plated
<b>Color</b>	Silver
<b>Size</b>	11, 16 mm.
<b>Units</b>	100 Per Set

## Nylon Backplate



<b>Material</b>	Nylon
<b>Color</b>	White, Silver
<b>Size</b>	Fits All Steel Hooks
<b>Units</b>	100 Per Set

## HangTite™ Hanger



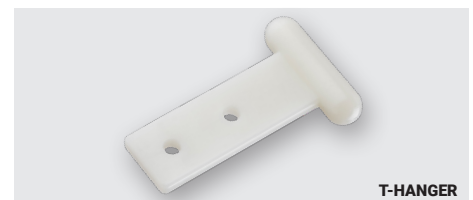
<b>Material</b>	Nylon
<b>Color</b>	White
<b>Size</b>	10 - 15 mm.
<b>Units</b>	100 Per Set

## HangTite™ For Grommets



<b>Material</b>	Nylon
<b>Color</b>	White
<b>Size</b>	10 - 15 mm.
<b>Units</b>	100 Per Set

## T-Hanger



<b>Material</b>	Nylon
<b>Color</b>	White
<b>Size</b>	11 mm.
<b>Units</b>	100 Per Set



## Menax® Snap Fastener



<b>Material</b>	PVC
<b>Color</b>	Black, White
<b>Units</b>	25 Per Set

## Menax® Plastic Post



<b>Material</b>	PVC
<b>Color</b>	Black, White
<b>Units</b>	25 Per Set

## Menax® Assembly Wrench



<b>Material</b>	1 Unit
<b>Color</b>	Black

## Menax® Machine Screw Post



<b>Material</b>	Brass, Nickel Plated
<b>Color</b>	Silver
<b>Units</b>	25 Per Set

## Menax® Stainless Steel Post



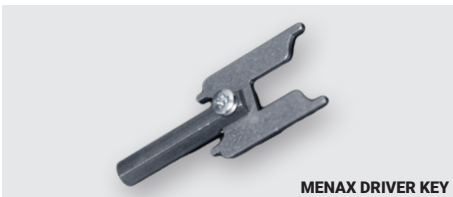
<b>Material</b>	Stainless Steel
<b>Color</b>	Silver
<b>Units</b>	25 Per Set

## Menax® Wood Screw Post



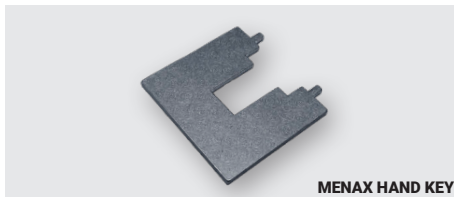
<b>Material</b>	Brass, Nickel Plated
<b>Color</b>	Silver
<b>Units</b>	25 Per Set

## Menax® Driver Key

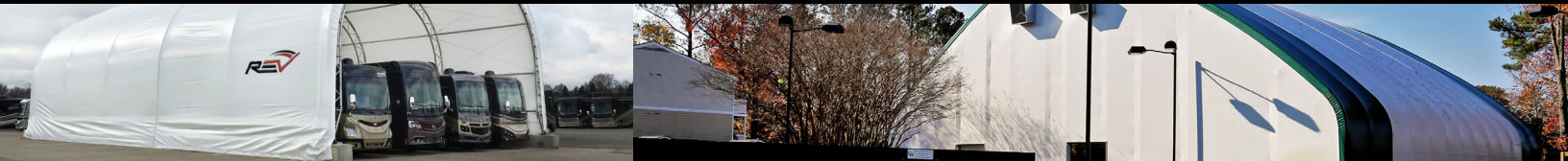


<b>Units</b>	1 Unit
<b>Color</b>	Gray

## Menax® Hand Key



<b>Material</b>	1 Unit
<b>Color</b>	Gray



## Alligator Buckle



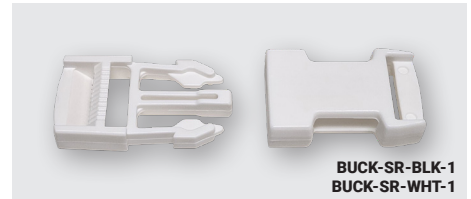
<b>Material</b>	Zinc-Plated Steel
<b>Color</b>	Silver, Black
<b>Size</b>	1, 1.5 in.
<b>Units</b>	25 Per Set

## Cam Buckle



<b>Material</b>	Stainless Steel
<b>Color</b>	Silver
<b>Size</b>	1, 2 in.
<b>Units</b>	25 Per Set

## Side Release Buckle



<b>Material</b>	Plastic
<b>Color</b>	White, Black
<b>Size</b>	1, 2 in.
<b>Units</b>	25 Per Set

## DriZip™ Zipper



<b>Material</b>	PVC
<b>Color</b>	White, Black
<b>Size</b>	150 ft. (Per Side) 2-track
<b>Units</b>	Sold By Roll/150 ft.

## DriZip™ Zipper Slide



<b>Material</b>	Nickel-Plated Steel
<b>Color</b>	Black
<b>Used With</b>	DriZip™ 2-Track
<b>Units</b>	Sold Per Unit

## Hemming Tape



<b>Material</b>	Polyester
<b>Color</b>	Transparent
<b>Unit Width</b>	0.5, 1, 1.5 in.
<b>Unit Length</b>	Sold By Roll/36 yd.

## Keder Drill Guide with Drill Bit



<b>Material</b>	Steel
<b>Color</b>	Gray
<b>Size</b>	11, 13 mm.
<b>Units</b>	Sold Per Unit

## Keder PVC Bullet



<b>Material</b>	PVC
<b>Color</b>	White
<b>Size</b>	13 mm.
<b>Units</b>	25 Per Set

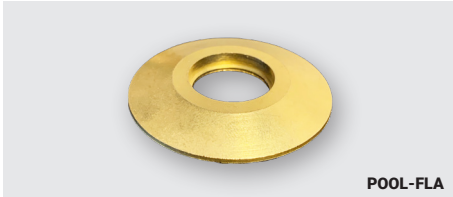
## Keder Rail Clamp



<b>Material</b>	Steel
<b>Color</b>	Silver
<b>Size</b>	4.75 in. Large, 2 in. Mini
<b>Units</b>	Sold Per Unit



## Brass Beauty Flange



<b>Material</b>	Brass
<b>Color</b>	Brass
<b>Size</b>	1-5/8" in. Fits 3/4" in. Hole
<b>Units</b>	10 Per Set

## Brass Concrete Anchor



<b>Material</b>	Brass
<b>Color</b>	Brass
<b>Size</b>	1-5/8" in. Fits 3/4" in. Hole
<b>Units</b>	10 Per Set

## Brass Wood Anchor



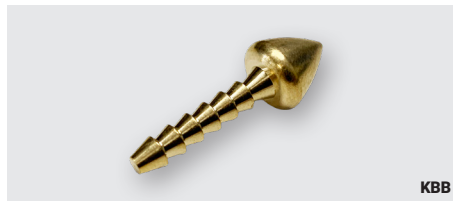
<b>Material</b>	Brass
<b>Color</b>	Brass
<b>Size</b>	1-5/8" in. Fits 3/4" in. Hole
<b>Units</b>	10 Per Set

## Hook and Loop



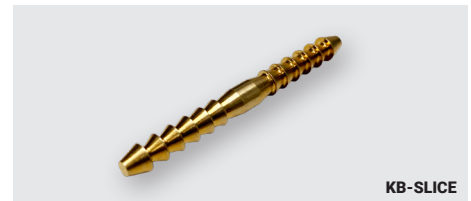
<b>Material</b>	Nylon
<b>Color</b>	White, Black
<b>Unit Size</b>	1, 2, 3, 4 in. x 50 yd.
<b>Backing</b>	Sew On, Adhesive

## Keder Brass Bullet



<b>Material</b>	Brass
<b>Color</b>	Brass
<b>Size</b>	8.5, 11, 13 mm.
<b>Units</b>	25 Per Set

## Keder Brass Splice



<b>Material</b>	Brass
<b>Color</b>	Brass
<b>Units</b>	25 Per Set

## Large Turn Button



<b>Material</b>	Nylon, Brass
<b>Color</b>	White, Silver
<b>Size</b>	Contact for Size
<b>Units</b>	10 Per Set

## Rail Cap, Double End



<b>Material</b>	PVC
<b>Color</b>	White
<b>Size</b>	9 mm. Double Rail
<b>Units</b>	10 Per Set

## Rail Cap, Single End



<b>Material</b>	PVC
<b>Color</b>	Gray
<b>Size</b>	8.5, 13 mm.
<b>Units</b>	10 Per Set



## Ring Holder Clip



<b>Material</b>	Steel
<b>Color</b>	Silver
<b>Used With</b>	Steel Rings
<b>Units</b>	25 Per Set

## Ring Holder, Heavy-Duty



<b>Material</b>	Steel
<b>Color</b>	Silver
<b>Used With</b>	Steel Rings
<b>Units</b>	25 Per Set

## Rivet Setting Dies



<b>Material</b>	Steel
<b>Color</b>	Silver
<b>Options</b>	Upper or Lower
<b>Units</b>	Sold Per Unit

## Rivet Setting Plate, Nylon



<b>Material</b>	Nylon
<b>Color</b>	Beige
<b>Used With</b>	Crocodile Hangers®
<b>Units</b>	Sold Per Unit

## Rivet Setting Plate, Steel



<b>Material</b>	Steel
<b>Color</b>	Silver
<b>Used With</b>	Crocodile Hangers®
<b>Units</b>	Sold Per Unit

## Steel D Rings



<b>Material</b>	Steel, Zinc or Nickel Plated
<b>Color</b>	Silver
<b>Size</b>	1, 1.5, 2 in.
<b>Units</b>	100 Per Set

## Steel O Rings



<b>Material</b>	Steel or Nickel Plated
<b>Color</b>	Silver
<b>Size</b>	1, 1.5, 2, 2.4 in.
<b>Units</b>	100 Per Set

## Vinyl Repair Tape



<b>Material</b>	PVC Laminated or Coated
<b>Color</b>	White, Black
<b>Unit Width</b>	6, 12, 18 in.
<b>Unit Length</b>	Sold by Roll/50 ft.

## Webbing



<b>Material</b>	Polypropylene
<b>Color</b>	White, Black
<b>Unit Size</b>	1, 2 in. x 100 yd.
<b>Backing</b>	Sew On, Weldable



## **BUILDING CONNECTIONS.**

Thank you for considering Keder Solutions for your keder product needs. We are committed to providing the best possible customer experience and delivering products that meet or exceed your expectations. Our team will work closely with you to understand your project needs and provide you with a customized quote that meets your specific requirements. We offer fast turnaround times to ensure that your project stays on schedule and within budget.



**Get Started Today!**

+1 (888) 727-7050  
sales@kedersolutions.com  
kedersolutions.com